

## BN01 Avibulb

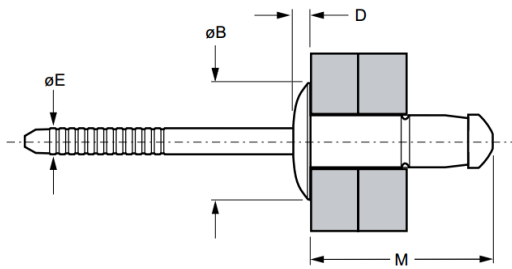
Dome head · Steel body · Steel stem · High strength bulbing  
3.2 mm (1/8") - 6.0 mm (.236")

### Features

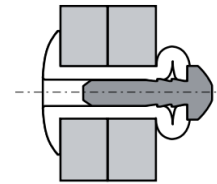
- Excellent bulbing tail formation
- High shear and tensile strength providing strong, vibration resistant joints
- Provides a large blind side bearing area against the rear sheet
- Spreads the tail bearing load/clamp load on the rear sheet making it ideal for use in thin sheet materials
- Good hole fill compensates for irregular, oversized, slotted or misaligned holes
- Retained stem avoids damage, electrical problems or rattling caused by loose stems

### Material

- Body: Low carbon steel, zinc plated, clear trivalent passivated
- Stem: Medium carbon steel, zinc plated, clear trivalent passivated



Before Placement



After Placement

Part No.	Size Ø	Grip Range		Hole Size		M max.	ØB max.	D max.	ØE max.	Shear (typical) kN	Tension (typical) kN
		min.	max.	min.	max.						
0BN01-00408	3.2 (1/8")	1.0	3.0	3.3	3.4	9.1	6.8	1.4	2.0	1.2	1.3
0BN01-00411		3.0	5.0			11.7				1.8	
0BN01-00414		5.0	7.0			14.0				2.5	
0BN01-00509	4.0 (5/32")	1.0	3.0	4.1	4.3	10.4	8.0	1.4	2.6	2.4	2.8
0BN01-00512		3.0	5.0			12.9				3.5	
0BN01-00516		5.0	7.0			15.7				4.1	
0BN01-00519		7.0	9.0			18.1				3.3	
0BN01-00611	4.8 (3/16")	1.5	3.5	4.9	5.1	12.1	9.6	1.5	3.2	3.6	3.8
0BN01-00614		3.5	6.0			14.7				4.2	
0BN01-00618		6.0	8.5			17.6				5.6	
0BN01-06010	6.0 (.236")	1.5	4.0	6.1	6.3	14.0	12.3	2.1	4.0	4.2	5.4
0BN01-06013		3.0	6.0			17.0				5.4	
0BN01-06016		6.0	9.0			20.0				8.5	
0BN01-06019		9.0	12.0			23.0				8.5	